



## Analysis of Fluid Pressure Drop Through a Globe Valve Using Computational Fluid Dynamics and Statistical Techniques

Mauricio Rhenals<sup>1</sup>, Armando Robledo<sup>1</sup>, Jonathan Fábregas<sup>1\*</sup>, Javier Carpintero<sup>2</sup>

<sup>1</sup> Facultad de Ingeniería, Maestría en Ingeniería Mecánica, Universidad Autónoma del Caribe, Barranquilla, Colombia

<sup>2</sup> Department of Civil and Environmental, Universidad De La Costa, Calle 58 #55-66, 080002 Barranquilla, Atlántico, Colombia

### ARTICLE INFO

#### Article history:

Received 29 October XXXX

Received in revised form 1 December XXXX

Accepted 9 December XXXX

Available online 10 December XXXX

#### Keywords:

Computational fluid dynamics (CFD);  
DOE statistical techniques; Globe  
valve; Response surface; Roughness

### ABSTRACT

Fluid mechanics plays a crucial role in everyday life, enabling the selection of accessories, materials, and various components essential for a system through which fluid flows. Pressure drop stands out as one of the most relevant factors in the design of fluid flow systems. However, analytical and experimental physical methods can increase these analyses' costs and time. Hence, in this study, statistical tools are employed to carry out specific experiments supported by numerical fluid simulation, aiming to comprehend the pressure drop behavior in a fluid as it passes through a globe valve. This valve, in turn, possesses distinct operating and manufacturing characteristics. The methods employed encompass a complete factorial system of response surface as support to construct the experimental design path through computational fluid dynamics. Among the key findings, it is demonstrated that, for systems with relatively low flow rates, the valve opening percentage does not exhibit a significant relationship with fluid pressure drop. Conversely, significant effects are observed for systems with relatively high flow rates regarding the valve opening percentage and pressure drop. It can be inferred that the integration of statistical experimental design techniques and computational fluid dynamics constitutes a valuable resource for studying the pressure drop of a fluid passing through a system.

## 1. Introduction

The application of Computational Fluid Dynamics (CFD) in systems involving hydraulic valves is essential for enhancing performance, efficiency, and safety while concurrently reducing costs and development time. This approach enables a more precise and efficient focus on the design and operation of valves across various industrial and engineering applications.

Design and optimization through CFD allow the simulation of fluid flow through valves, analyzing how their design influences efficiency, pressure loss, control capacity, and lifespan. This facilitates the optimization of the design to meet the specific requirements of a given system, as presented in [1-3]. Moreover, by identifying areas where energy losses occur in the simulated system, these losses can be minimized, significantly impacting energy efficiency and operational costs.

\* Corresponding author.

E-mail address: [jonathanfabregasv@gmail.com](mailto:jonathanfabregasv@gmail.com) (Jonathan Fábregas)

<https://doi.org/10.37934/cfdl.15.3.XX>

CFD tools also contribute to cost reduction in development and testing, as adjustments can be made in a computational environment to achieve the expected results, thereby improving the performance and safety required by the design. Additionally, the application of Design of Experiments (DOE) in fluid mechanics aids in the analysis of developed tests, providing a valuable assessment of fluid behavior in simulated systems and optimizing performance efficiently and effectively, as indicated in [4-8].

Furthermore, CFD analysis allows for the study of the effects of hydraulic jumps caused by obstacles in the path of a fluid, significantly affecting its behavior. This leads to an increase in the Reynolds number and, consequently, an increase in fluid energy, as demonstrated in the work of Jasim et al., [9]. CFD is widely employed in various studies to examine the thermal and pressure drop effects of fluid flow through corrugated or obstructed surfaces, as shown in [10-15].

Measuring the pressure drop of a fluid passing through pipes and fittings is crucial, as it impacts the power and energy consumption of devices driving the fluids, thereby influencing investment, operational costs, and maintenance, as indicated in [16-21].

In works such as Qingyun et al., [22], the behavior of fluid flow through a control valve is simulated to obtain a model for predicting the flow coefficient through the valve, varying opening positions and flow velocities. In other studies, such as Garg et al., [23], the effect of air pressure flowing through a pipe is determined by analyzing leakage behavior in the pipe, all through the application of CFD techniques. Reich's work [24] evaluates the behavior of steam flow through a valve by adjusting control input conditions, such as flow velocities. Serani et al., [25], conducted a study using adaptive sampling methods linked to the CFD simulation process to optimize the performance of the dynamic fluid system they studied.

With the aforementioned, it is demonstrable that the use of CFD tools for systems involving the behavior of fluid through a system, such as a globe valve, allows the evaluation of pressure drop effects by varying conditions such as valve opening percentage, valve material roughness, and flow velocity through the system.

## **2. Materials and Methods**

It is essential to model the dynamic fluid behavior of a fluid passing through a globe valve system to evaluate the system's pressure drop under specific initial process conditions. To achieve this, the analysis is implemented through a Design of Experiments (DOE) that allows for correlating the tests applied at each stage of the process, simulated through CFD.

This is where an analysis of variance (ANOVA), applying response surfaces in statistical tools used for a DOE, enables an understanding of the relationship between independent and dependent variables, as explained in [26].

In a design of experiments, experiments are planned and executed to explore how independent variables (factors) affecting a dependent variable (response) are systematically designed to obtain data that helps understand the influence of factors on the response variable and, simultaneously, find optimal conditions in a simulated design space.

In the current study, a response surface-based design of experiments will be applied for a complete  $3^3$  factorial design, with three factors and, for each of these, three levels of quantitative variation, along with a quantitative response variable. This results in 27 treatments for a good approximation of the result in a regression equation.

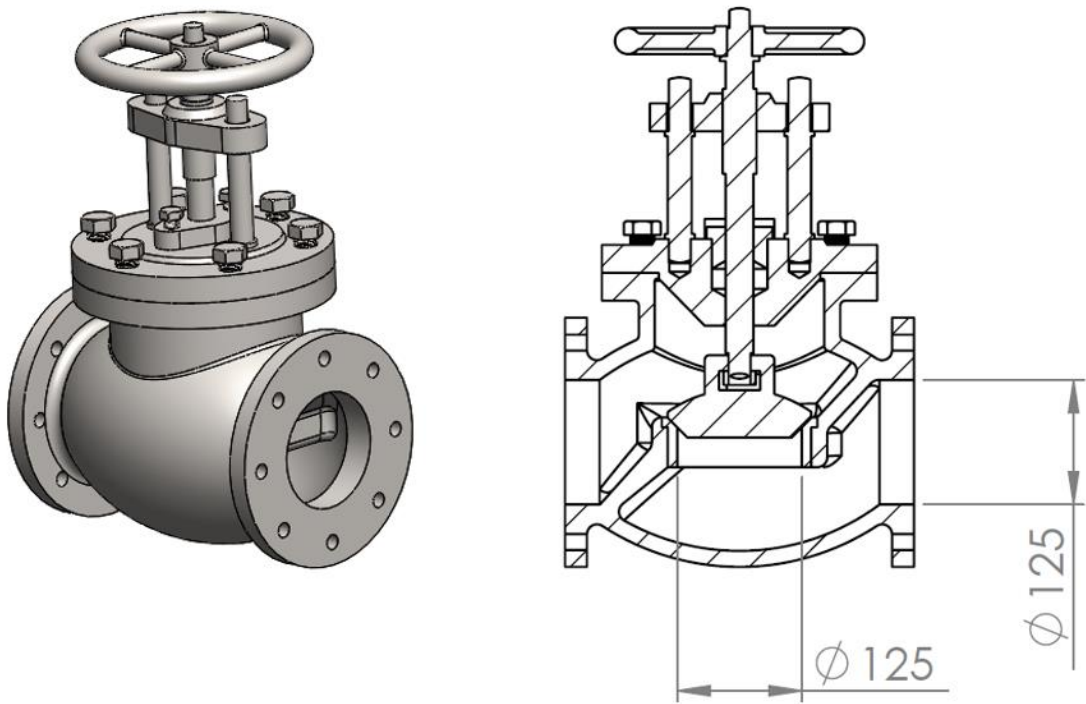
The factors chosen for the DOE are the surface roughness of the globe valve material ( $Ra$ ), the valve opening percentage ( $\%A$ ), and the flow rate ( $Q$ ). The response variable is the pressure drop ( $\Delta P$ ) expressed in  $kPa$ .

The choice of the application range will be based on the operating values in this type of system. The  $Ra$  of materials used for hydraulic valves may vary depending on the type of metal and the manufacturing process and is generally measured in micrometers  $\mu m$ . For three common metals used in hydraulic valves, such as Stainless Steel, Brass, and Aluminum,  $Ra$  values typically fall within the following operating range: Stainless Steel from 0.2 to 0.6  $\mu m$ , Brass from 0.8 to 1.6  $\mu m$ , Aluminum from 1.6 to 3.2  $\mu m$ . Therefore, the factors and treatment levels will be expressed as shown in Table 1.

**Table 1**  
 Factors implemented in the DOE

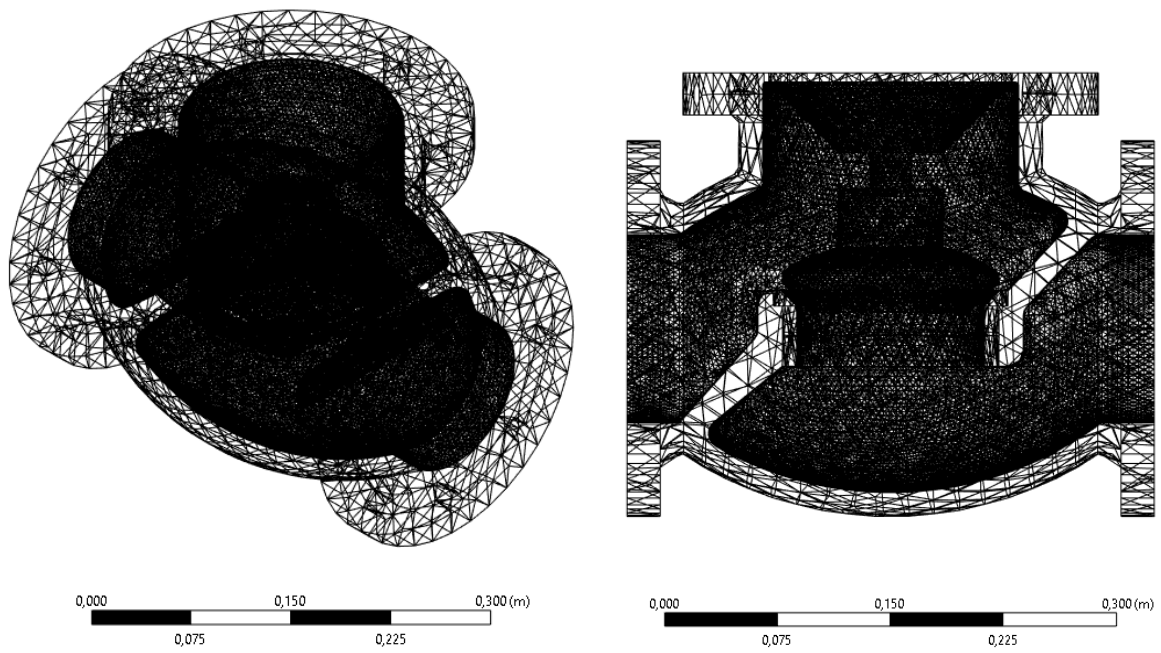
Factors	Minimum level: -1	Medium level: 0	Maximum level: +1
$Ra [\mu m]$	0.2	1.7	3.2
$\%A [\%]$	20	60	100
$Q [m^3/s]$	0.001	0.0155	0.03

To initiate the CFD simulation, we begin by obtaining the Computer-Aided Design (CAD) of the target globe valve, as illustrated in Figure 1 below.



**Fig. 1.** Geometry of the studied globe valve, units in mm

The volumetric mesh is generated, and boundary conditions, including entry, exit, and wall effects, are assigned. Mesh inflation conditions were applied during volumetric meshing to model the boundary layer effects of the fluid as it passes through the valve passage. Figure 2 below shows the setup of the system.



**Fig. 2.** Generated volumetric meshing of the system

When conducting numerical analysis and modeling of the behavior of fluid flowing through a globe valve, it is essential to activate the relevant equations for the effective implementation of the process. These equations include the energy equation, momentum equation, continuity equation, viscosity equation, among others.

The development of these equations is achieved through CFD analysis, utilizing tools for fluid flow behavior analysis. This involves working with a set of equations specifically tailored for the  $k-\varepsilon$  turbulence model, represented by equations (1) and (2).

$$\frac{\partial}{\partial t}(\rho k) + \frac{\partial}{\partial x_j}(\rho k u_j) = \frac{\partial}{\partial x_j} \left[ \Gamma_k \frac{\partial k}{\partial x_j} \right] + G_k + G_b - \rho \varepsilon - Y_M + S_k \quad (1)$$

$$\frac{\partial}{\partial t}(\rho \varepsilon) + \frac{\partial}{\partial x_j}(\rho \varepsilon u_j) = \frac{\partial}{\partial x_j} \left[ \Gamma_\varepsilon \frac{\partial \varepsilon}{\partial x_j} \right] + \rho C_1 S_\varepsilon - \rho C_2 \frac{\varepsilon^2}{k + \sqrt{\nu \varepsilon}} + C_{1\varepsilon} \frac{\varepsilon}{k} C_{3\varepsilon} G_b + S_\varepsilon \quad (2)$$

In these equations,  $u$  is the fluid velocity,  $G_k$  represents the generation of turbulent kinetic energy due to mean velocity gradients, while  $G_\varepsilon$  represents the generation of  $\varepsilon$ .  $\Gamma_k$  and  $\Gamma_\varepsilon$  denote the effective diffusivity of  $k$  and  $\varepsilon$ , respectively.  $Y_M$  represents the contribution of fluctuating expansion in compressible turbulence to the overall dissipation rate.  $S_k$  and  $S_\varepsilon$  are user-defined source terms, and the  $C$  values are design constants.

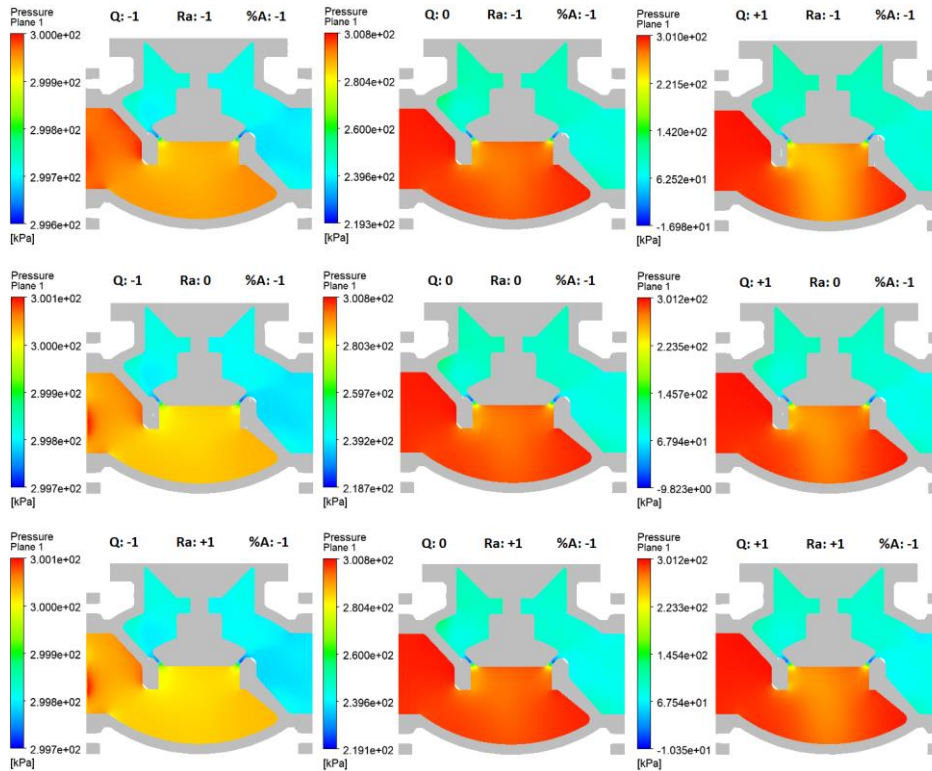
### 3. Results

Once the experiments supported by the CFD tool have been conducted, the treatment table is obtained based on the levels of the independent variables used, along with its corresponding result in the response variable, which, in this research, is the pressure drop. Table 2 below presents the developed Design of Experiments (DOE), and after this, the behaviors of these treatments in the CFD program will be illustrated.

**Table 2**  
DOE results performed for globe valve system

Q	%A	Ra	$\Delta P$
0.001	20	0.2	0.225
0.0155	20	0.2	55.108
0.03	20	0.2	213.88
0.001	60	0.2	0.067
0.0155	60	0.2	14.223
0.03	60	0.2	59.133
0.001	100	0.2	0.049
0.0155	100	0.2	11.63
0.03	100	0.2	43.813
0.001	20	1.7	0.249
0.0155	20	1.7	55.95
0.03	20	1.7	216.155
0.001	60	1.7	0.065
0.0155	60	1.7	13.809
0.03	60	1.7	58.255
0.001	100	1.7	0.049
0.0155	100	1.7	11.474
0.03	100	1.7	43.343
0.001	20	3.2	0.247
0.0155	20	3.2	56.731
0.03	20	3.2	220.079
0.001	60	3.2	0.065
0.0155	60	3.2	13.831
0.03	60	3.2	58.04
0.001	100	3.2	0.051
0.0155	100	3.2	11.553
0.03	100	3.2	41.678

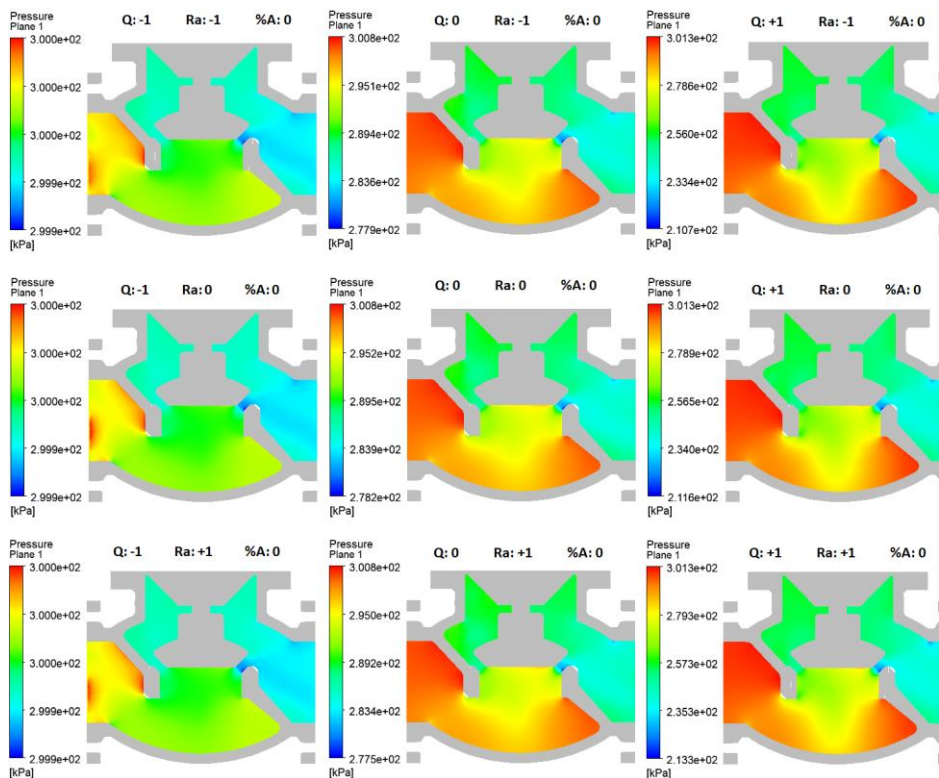
The results are depicted through pressure profiles for each treatment configuration conducted in the 27 DOE experiments. Figure 3 below illustrates the pressure drop behavior as the fluid flows through the globe valve, considering a minimum valve opening level and varying the flow rate and surface roughness within their respective ranges of values.



**Fig. 3.** Tests for pressure drop for a minimum valve opening level

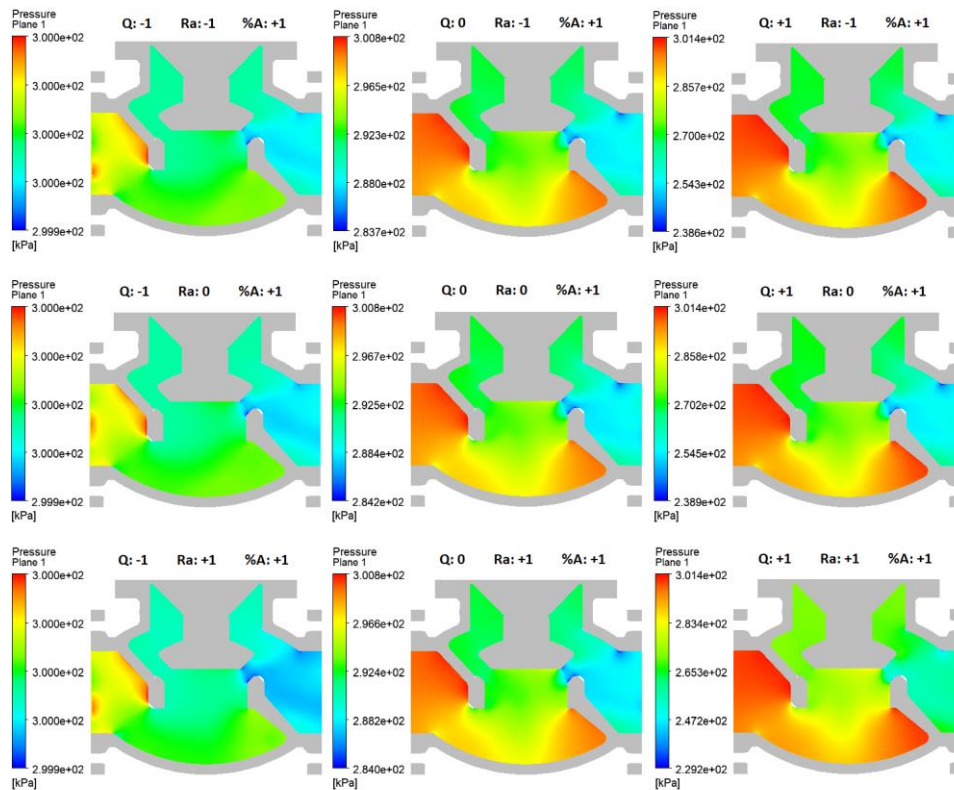
Based on the visual results presented in the previous figure, it is noteworthy that the variation in pressure drop becomes evident as the fluid flow rate increases. In contrast, the impact is less pronounced when maintaining a constant flow rate while varying the surface roughness.

In Figure 4 below, the schematic sequence is replicated for a medium valve opening level.



**Fig. 4.** Tests for pressure drop for a medium valve opening level

Similar to Figure 3, the pressure drop behavior is primarily influenced by increasing flow values and is less significantly affected by variations in the surface roughness of the valve. As the final diagram completes the 27 treatments, Figure 5 illustrates the pressure drop of the fluid when the globe valve is at its maximum opening percentage.



**Fig. 5.** Tests for pressure drop for a maximum valve opening level

For the maximum valve opening percentage, the pressure drop values are displayed as the minimum from the conducted experiments, varying both the flow rate and the roughness. Due to complications in the visual analysis of the results, the statistical tool of variance analysis (ANOVA) is employed. This tool enables the correlation of all results and helps identify which factors are genuinely significant for the investigated system. as shown in Table 3 below.

**Table 3**  
 ANOVA of the simulated system

Sources of variation	Sum of squares	DF	Mean sum of square	F-ratio	P-value
A: Q	36548.9	1	36548.9	85.74	0.0000
B: %A	16936.7	1	16936.7	39.73	0.0000
C: Ra	0.0828245	1	0.0828245	0.00	0.9890
AA	4035.66	1	4035.66	9.47	0.0068
AB	22594.7	1	22594.7	53.01	0.0000
AC	0.724717	1	0.724717	0.00	0.9676
BB	5546.74	1	5546.74	13.01	0.0022
BC	8.42358	1	8.42358	0.02	0.8899
CC	0.0538338	1	0.0538338	0.00	0.9912
Total error	7246.28	17	426.252		
Total (corr.)	113756,	26			

The ANOVA Table 5 partitions the variability of  $\Delta P$  into separate components for each effect, then assesses the statistical significance of each effect by comparing its mean square against an estimate of the experimental error. In this case, five effects have a P-value less than 0.05, indicating their significant difference from zero at a 95.0% confidence level.

By excluding the effects of non-significant factors and their interactions, the R-Square statistic suggests that the adjusted model explains 93.621% of the variability in PD. The adjusted R-squared statistic, more suitable for comparing models with different numbers of independent variables, is 92.1022%. The standard error of the estimate reveals that the standard deviation of the residuals is 18.5888. The mean absolute error (MAE) of 14.5004 represents the average value of the residuals. The Durbin-Watson (DW) statistic tests the residuals for significant correlations based on the data order. Since the P-value is greater than 5.0%, there is no indication of serial autocorrelation in the residuals at the 5.0% significance level.

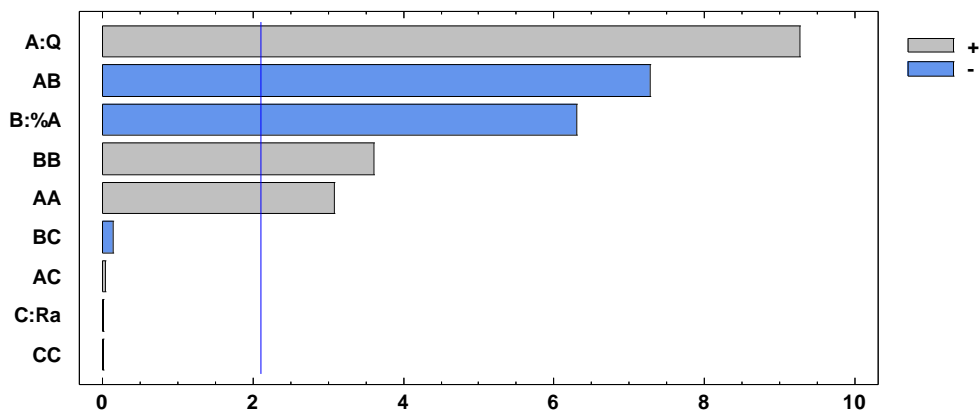


Fig. 6. Pareto diagram of the standardized effect for  $\Delta P$  of the system

The Pareto diagram depicted in Figure 6 visually displays the significant effects of the conducted experiments concerning the response variable. It indicates that, to a greater extent, the maximum value of the flow rate is the effect most closely related to the pressure drop in the system. Simultaneously, the minimum value of the opening percentage significantly influences the pressure drop. However, it is noteworthy that the surface roughness does not significantly affect the pressure drop.

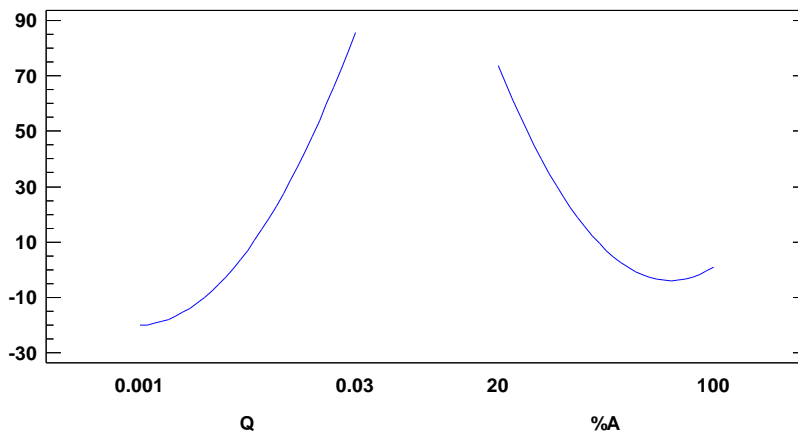


Fig. 7. Plot of main effects with respect to  $\Delta P$  of the system



From the preceding Figure 7, we can emphasize the non-linearity of the factors Q and %A in the valve system concerning the pressure drop  $\Delta P$ . This highlights the impact of these effects on the behavior of the response variable.

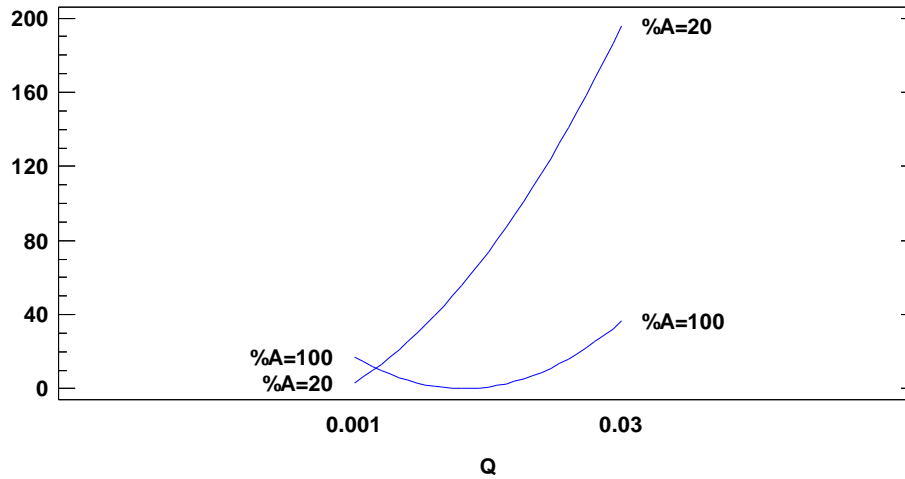


Fig. 8. Effects interaction plot for the  $\Delta P$  of the system

The interaction of effects illustrated in Figure 8 reveals that for the minimum level of Q, the variation in %A is not significant for the  $\Delta P$  of the system. However, for the medium and maximum levels of Q, the variation in %A becomes indeed significant for the  $\Delta P$  of the system.

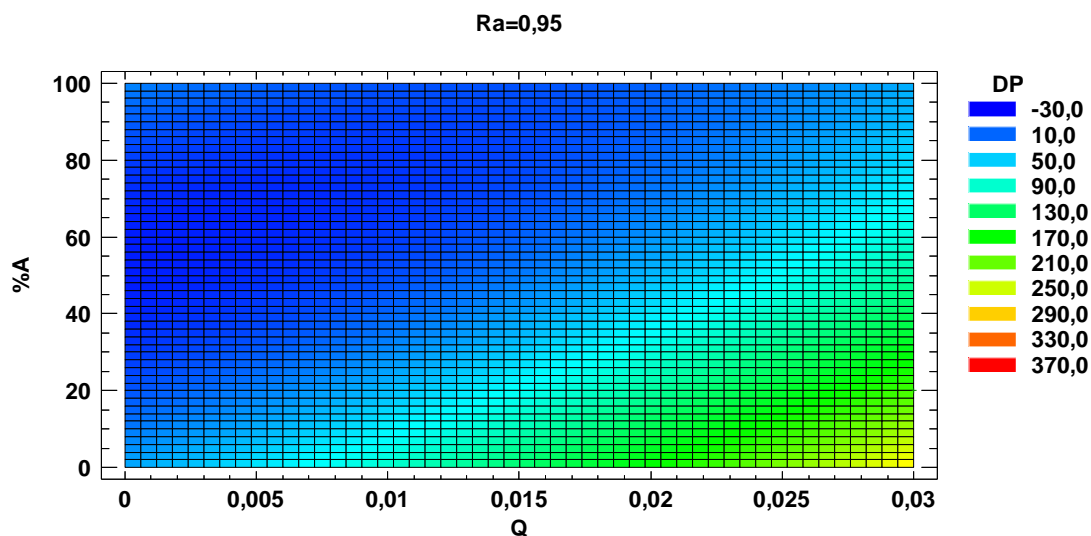


Fig. 9. Contour map of the pressure drop of a fluid across the valve

In the preceding Figure 9, the behavior of the pressure drop is visually depicted through color profiles of the fluid passing through a globe valve. It emphasizes that the lower the opening percentage and the higher the flow, the greater the value of the pressure drop. Subsequently, the regression model for the evaluated system is obtained and represented as follows:

$$\Delta P = 33.3123 + 4317.48Q - 2.03044\%A + 123352Q^2 - 74.8144Q\%A + (1.24171E - 10)QRa + 0.0190031\%A^2 \quad (3)$$

## 4. Conclusions

An analysis utilizing Design of Experiments (DOE) statistical techniques for a response surface model of the experimental factors, along with the application of Computational Fluid Dynamics (CFD), enabled the numerical prediction of the pressure drop behavior of a fluid as it passes through a globe valve.

A notable finding is that the roughness of materials commonly used for valve manufacturing does not significantly impact the pressure drop of a fluid flowing through these systems. However, the opening percentage of the globe valve proves to be significant, especially in scenarios where the flow is relatively high.

The methodology employed to derive equations that incorporate various influencing factors on pressure drop can be applied to a range of accessories within the field of fluid mechanics. This approach yields an academic product derived from computational experimentation.

It is recommended to pursue similar studies involving various types of accessories within fluid mechanics. This approach serves as a valuable method for teaching and learning in the realms of computational fluid mechanics and statistical analysis through the application of the Design of Experiments (DOE).

## Acknowledgement

This research was not funded by any grant.

## References

- [1] Rezaey, Saber. "Numerical investigation of a globe control valve and estimating its loss coefficient at different opening states." *European Journal of Computational Mechanics* (2020): 549-576.  
<https://doi.org/10.13052/ejcm1779-7179.294610>
- [2] Rani, Ahmad Majdi Abdul, Mohd Norhisyam Awang, M. Nasir A. Rani, Nur Athirah Ishar, Harvey M. Thompson, M. Hafizun Hassan, Bushra Mohamad Zakir, and Ahmad Tarmizi Hassan. "Simulation-enabled design and analysis of globe valve." In *Journal of Physics: Conference Series*, vol. 2051, no. 1, p. 012025. IOP Publishing, 2021.  
<https://doi.org/10.1088/1742-6596/2051/1/012025>
- [3] Nguyen, Quang Khai, Kwang Hyo Jung, Gang Nam Lee, Sung Bu Suh, and Peter To. "Experimental study on pressure distribution and flow coefficient of globe valve." *Processes* 8, no. 7 (2020): 875.  
<https://doi.org/10.3390/pr8070875>
- [4] Lira, Jéssica OB, Humberto G. Riella, Natan Padoin, and Cíntia Soares. "CFD+ DoE optimization of a flat plate photocatalytic reactor applied to NOx abatement." *Chemical Engineering and Processing-Process Intensification* 154 (2020): 107998.  
<https://doi.org/10.1016/j.cep.2020.107998>
- [5] Izadi, Ahad, Elham Kashani, and Ali Mohebbi. "Combining 10 meta-heuristic algorithms, CFD, DOE, MGGP and PROMETHEE II for optimizing Stairmand cyclone separator." *Powder Technology* 382 (2021): 70-84.  
<https://doi.org/10.1016/j.powtec.2020.12.056>
- [6] Tambolkar, Pooja, Aishwarya Ponkshe, Vrushali Mulay, and Anand Bewoor. "Use of taguchi DOE for CFD simulation to maximize the reusability of working fluids of centrifugal filter." *Procedia Manufacturing* 46 (2020): 608-614.  
<https://doi.org/10.1016/j.promfg.2020.03.087>
- [7] Carpintero, Javier, Fausto A. Canales, Jonathan Fábregas, and José Ávila. "Factors and interactions that influence the pressure drop across an air volume reducing device on low-pressure water distribution networks." *Iranian Journal of Science and Technology, Transactions of Civil Engineering* 46, no. 2 (2022): 1433-1443.  
<https://doi.org/10.1007/s40996-021-00682-z>
- [8] Carpintero, Javier, Jennifer Villa-Dominguez, María José Tavera-Quiroz, Humberto Carlos Tavera-Quiroz, Bartosz Kaźmierczak, Jonathan Fábregas-Villegas, and Fausto A. Canales. "Application of a 2k-p fractional experimental design in coagulation-flocculation processes in the treatment of wastewater from a slaughterhouse." *Sustainability* 14, no. 16 (2022): 10402.  
<https://doi.org/10.3390/su141610402>

- [9] Jasim, Rasha Abdulrazzak, Wajdi Qasim Hussen, Mahir Faris Abdullah, and Rozli Zulkifli. "Numerical Simulation of Characterization of Hydraulic Jump Over an Obstacle in an Open Channel Flow." *Journal of Advanced Research in Fluid Mechanics and Thermal Sciences* 106, no. 1 (2023): 1-15.  
<https://doi.org/10.37934/arfmts.106.1.115>
- [10] Amina, Mostefaoui, Saim Rachid, and Abboudi Saïd. "Numerical Analysis of The Thermo-Convective Behaviour of an Al<sub>2</sub>O<sub>3</sub>-H<sub>2</sub>O Nanofluid Flow Inside a Channel with Trapezoidal Corrugations." *Journal of Advanced Research in Fluid Mechanics and Thermal Sciences* 89, no. 2 (2022): 114-127.  
<https://doi.org/10.37934/arfmts.89.2.114127>
- [11] Benkara-Mostefa, Karima Heguehoug, and Rahima Benchabi-Lanani. "Heat Transfer and Entropy Generation of Turbulent Flow in Corrugated Channel using Nanofluid." *Journal of Advanced Research in Fluid Mechanics and Thermal Sciences* 109, no. 2 (2023): 136-150.  
<https://doi.org/10.37934/arfmts.109.2.136150>
- [12] Abugnah, Elhadi Kh, Wan Saiful-Islam Wan Salim, and Abdulhafid M. Elfaghi. "Impact of Geometrical Parameters on Heat Transfer Characteristics of SiO<sub>2</sub>-Water Nanofluid Flow through Rectangular Corrugated Channels." *Journal of Advanced Research in Fluid Mechanics and Thermal Sciences* 104, no. 2 (2023): 86-102.  
<https://doi.org/10.37934/arfmts.104.2.86102>
- [13] Elfaghi, Abdulhafid MA, Alhadi A. Abosbaia, Munir FA Alkbir, and Abdoulhdi AB Omran. "CFD Simulation of Forced Convection Heat Transfer Enhancement in Pipe Using Al<sub>2</sub>O<sub>3</sub>/Water Nanofluid." *Journal of Advanced Research in Numerical Heat Transfer* 8, no. 1 (2022): 44-49.  
<https://akademiabaru.com/submit/index.php/arnht/article/view/4501>
- [14] Idris, Muhammad Syafiq, Irmie Azlin Zakaria, and Wan Azmi Wan Hamzah. "Heat transfer and pressure drop of water based hybrid Al<sub>2</sub>O<sub>3</sub>: SiO<sub>2</sub> nanofluids in cooling plate of PEMFC." *Journal of Advanced Research in Numerical Heat Transfer* 4, no. 1 (2021): 1-13.  
<https://www.akademiabaru.com/submit/index.php/arnht/article/view/1474>
- [15] Elfaghi, Abdulhafid MA, Alhadi A. Abosbaia, Munir FA Alkbir, and Abdoulhdi AB Omran. "CFD Simulation of Forced Convection Heat Transfer Enhancement in Pipe Using Al<sub>2</sub>O<sub>3</sub>/Water Nanofluid." *Journal of Advanced Research in Numerical Heat Transfer* 8, no. 1 (2022): 44-49.  
<https://akademiabaru.com/submit/index.php/arnht/article/view/4501>
- [16] Sidik, Nor Azwadi Che, Saidu Bello Abubakar, and Siti Nurul Akmal Yusof. "Measurement of Fluid Flow and Heat Transfer Performance in Rectangular Microchannel using Pure Water and Fe<sub>3</sub>O<sub>4</sub>-H<sub>2</sub>O Nanofluid." *Journal of Advanced Research in Applied Mechanics* 68, no. 1 (2020): 9-21.  
<https://doi.org/10.37934/aram.68.1.921>
- [17] Sidik, Nor Azwadi Che, Abdolbaqi Mohammed Khdher, and Siti Nurul Akmal Yusof. "Heat Transfer Enhancement in Straight Channel with Nanofluid In Fully Developed Turbulent Flow." *Journal of Advanced Research in Applied Mechanics* 63, no. 1 (2019): 1-15.  
<https://www.akademiabaru.com/submit/index.php/aram/article/view/1852>
- [18] Anwar, Rama Putrantyo, Sri Sundari, and Mochamad Syamsiro. "Computational Fluid Dynamics of Two-Phase Flow Pressure Gradient of Air-Sodium Chloride and Glucose in Horizontal Capillary Channels." *CFD Letters* 14, no. 1 (2022): 52-65.  
<https://doi.org/10.37934/cfdl.14.1.5265>
- [19] Enam, Samin, Muhammad Noor Afiq Witri Muhammad, and Nor Azwadi Che Sidik. "Numerical Investigation on The Effect of Grille Blockage Ratio on Air Flow Characteristics of Air Vents." *CFD Letters* 14, no. 10 (2022): 32-41.  
<https://doi.org/10.37934/cfdl.14.10.3241>
- [20] Khan, Umair, William Pao, Nabihah Sallih, and Farruk Hassan. "Identification of Horizontal Gas-Liquid Two-Phase Flow Regime Using Deep Learning." *CFD Letters* 14, no. 10 (2022): 68-78.  
<https://doi.org/10.37934/cfdl.14.10.6878>
- [21] Fábregas, Jonathan, Henry Santamaria, Edgardo Buelvas, Saul Perez, Carlos Díaz, Javier Andrés Carpintero Durango, Ricardo Mendoza, and Jennifer Villa. "Computational fluid dynamics modeling of microchannels cooling for electronic microdevices." *IJUM Engineering Journal* 23, no. 1 (2022): 384-396.  
<https://doi.org/10.31436/iiumej.v23i1.2113>
- [22] Bu, Qingyun, Aliyu Aliyu, and Rakesh Mishra. "A new one-dimensional control valve model for the local flow coefficient based on local analysis of CFD data." *International Journal of COMADEM* 25, no. 1 (2022): 5-8.
- [23] Garg, Kapil, Suvir Singh, Mahadev Rokade, and Shubham Singh. "Experimental and computational fluid dynamic (CFD) simulation of leak shapes and sizes for gas pipeline." *Journal of Loss Prevention in the Process Industries* (2023): 105112.  
<https://doi.org/10.1016/j.jlp.2023.105112>

- [24] Reich, Alton. "Use of CFD to Improve Control Valve Effectiveness." In Pressure Vessels and Piping Conference, vol. 58943, p. V003T03A059. American Society of Mechanical Engineers, 2019.  
<https://doi.org/10.1115/PVP2019-93417>
- [25] Serani, A., R. Pellegrini, J. Wackers, C-E. Jeanson, P. Queutey, Michel Visonneau, and M. Diez. "Adaptive multi-fidelity sampling for CFD-based optimisation via radial basis function metamodels." *International Journal of Computational Fluid Dynamics* 33, no. 6-7 (2019): 237-255.  
<https://doi.org/10.1080/10618562.2019.1683164>
- [26] Chen, Wei-Hsin, Manuel Carrera Uribe, Eilhann E. Kwon, Kun-Yi Andrew Lin, Young-Kwon Park, Lu Ding, and Lip Huat Saw. "A comprehensive review of thermoelectric generation optimization by statistical approach: Taguchi method, analysis of variance (ANOVA), and response surface methodology (RSM)." *Renewable and Sustainable Energy Reviews* 169 (2022): 112917.  
<https://doi.org/10.1016/j.rser.2022.112917>